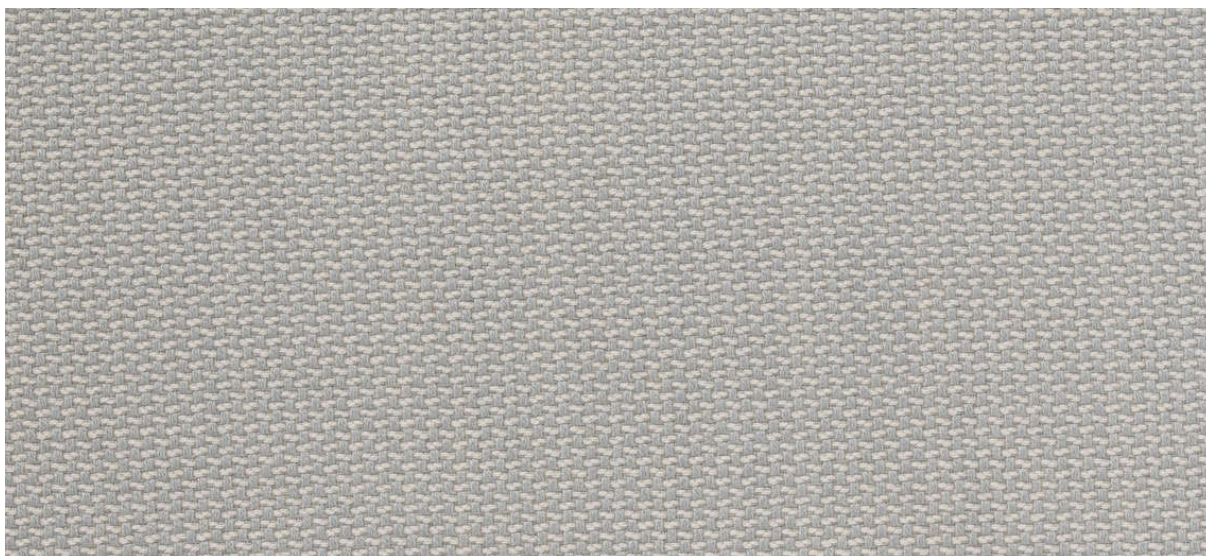


lindau

7028.01 - 7028.33



binder

upholstery 02

descrizione

**tessuto per l'arredamento in lana a 2 colori,
utilizzabile su entrambe le facciate**

composizione

80% lana / 20% poliammide

altezza

± 140 cm, ± 55 inches

peso

± 536 gr/m¹, ± 17 oz/yd¹ fabrics

resistenza al fuoco

EN 1021/1-2

BS 5852, crib 5

DIN 4102, B2 + FR finish

UNI 9175, classe 1

Cal TB 117

NFPA 260, class 1

resistenza all'abrasione

ISO 12947-2

100.000 rubs martindale

ASTM D4157

45.000 double rubs wyzenbeek

resistenza al pilling

ISO 12945-2

3 (scala 1-5)

ASTM D3511

2,5 (scala 1-5)

solidità allo sfregamento

ISO 105-X12

bagnato 4 / asciutto 4-5 (scala 1-5)

AATCC 8

bagnato 5 / asciutto 4.5 (scala 1-5)

resistenza alla luce

ISO 105-B02

chiari 4-5 / scuri 4-5 (scala 1-8)

AATCC 16.3: 40 hours

5 (scala (1-5))

resistenza al taglio cucitura

ISO 13936 - 2

catena 4 mm / trama 3.5 mm

ASTM D4034

catena 39 lbs / trama 89 lbs

manutenzione



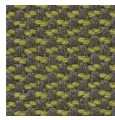


lindau

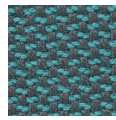
7028.01 - 7028.33



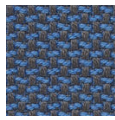
7028.01



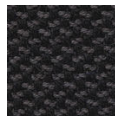
7028.15



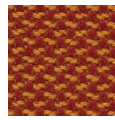
7028.13



7028.04



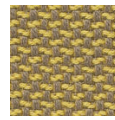
7028.09



7028.22



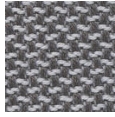
7028.19



7028.20



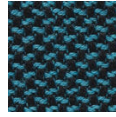
7028.26



7028.02



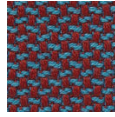
7028.14



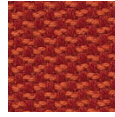
7028.10



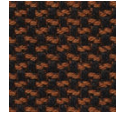
7028.08



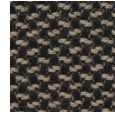
7028.18



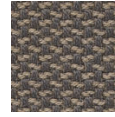
7028.21



7028.23



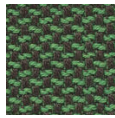
7028.32



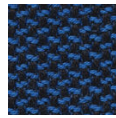
7028.30



7028.03



7028.12



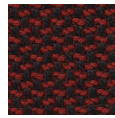
7028.07



7028.11



7028.31



7028.28



7028.24



7028.29



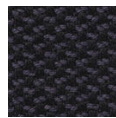
7028.33



7028.06



7028.05



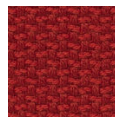
7028.16



7028.17



7028.27



7028.25